

## 47VL10

- Resolution: 1,920 x 1,080 (FHD)
- Exclusive PD Panel
- Super IPS Panel
- Optimized Interface
- Energy Star 5.0
- ErP Certified



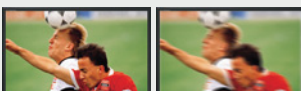
### KEY FEATURES

#### WIDE VIEWING ANGLE

Super In Plane Switching or Super IPS is the exclusive feature of LG LED LCD Display. This unique technique has the better control of liquid crystal and in consequence, it allows you to watch the screen virtually at any angle.

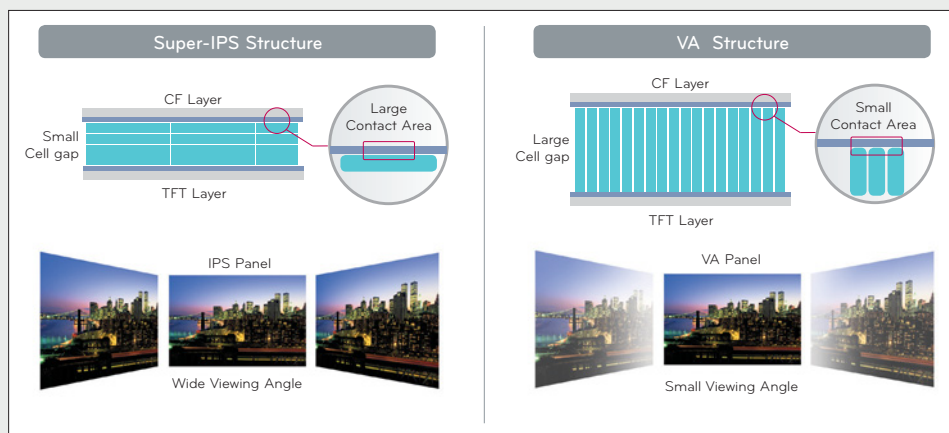
#### VIVID AND CLEAR MOTION PICTURE

Motion picture looks vivid and clear in IPS panel that is the exclusive features of LG LED LCD Display.



Super-IPS Structure

VA Structure



### REAR PANEL CONNECTORS





**47VL10**

## SPECIFICATION

PANEL	Screen Size	47"	
	Aspect Ratio	16 : 9	
	Native Resolution	1920 X 1080 (FHD)	
	Pixels(H x V x 3)	6,220,800	
	Brightness	500 cd/m <sup>2</sup>	
	Contrast Ratio / Dynamic CR	1,300:1 / 3,000:1 (DCR)	
	Viewing Angle(H x V)	178 x 178	
	Color Depth	1.06 Billion	
	Response Time	9 ms (G to G)	
	Surface Treatment	Hard Coating (3H) Anti-glare	
	VIDEO	Max Input Resolution	1920 X 1080@ 60Hz (RGB, HDMI/DVI)
Recommended Resolution		1920 X 1080@ 60Hz(RGB, HDMI/DVI)	
H-Scanning Frequency		30 ~ 83kHz (RGB, HDMI/DVI)	
V-Scanning Frequency		56 ~ 75 Hz(RGB), 60 Hz(HDMI/DVI)	
Pixel Frequency		148.5 MHz (RGB, HDMI/DVI)	
Sync Compatibility		Separate / Composite / Digital	
Video Input		RGB, HDMI/DVI	
Picture Mode		Vivid / Standard / Cinema / Sports / Game / User1 / User2	
INPUT (REAR)	Color Temperature	Warm / Medium / Cool / User	
	Digital	HDMI/DVI with HDCP	
	Analog	Composite (BNC), RGB	
	Audio	RGB/DVI Audio, Composite Audio (RCA)	
	External Control	Rs232C, RJ45	
OUTPUT (REAR)	USB	No	
	HDTV Formats	HDMI : 720P / 1080i / 1080p	
	Audio	External speaker	
AUDIO	External Control	No	
	Auto Volume	Yes	
	Balance	Yes	
	Audio Power	20W (10W x 2)	
	Speaker On/off	Yes	
	Sound Mode	Clear Voice/Standard/Music/Cinema/Sports/Game/User	
	SPECIAL FEATURES	Temperature Sensor	Yes
Cooling FAN		Yes	
Tile Mode		Yes, Up to 5x5	
Natural mode @Tile mode		Yes	
Image Zoom		HDMI/DVI, RGB, AV	
Brightness/Contrast/Backlight		Yes	
Position/Size		Yes	
Auto Config/Phase		Yes	
Language (OSD)		English, French, Spanish, Italian, German, Portuguese, Korean, Japanese, Chinese, Russian	
Language (Manual)		English, French, Spanish, Italian, German, Portuguese, Korean, Japanese, Chinese, Russian, Hungarian, Greek, Dutch, Kazakh, Ukrainian, Polish, Arabic, Indonesian	
ISM Method		Normal / White wash / Orbiter / Inversion / Dot wash	
Advanced		Gamma / Film mode / Black level / Noise Reduction	
Time		Auto sleep / Power on Delay	
Information		Serial Number, SET ID, MNT S/W Version, LAN S/W Version	
Auto Power/Source Memory		Yes	
Key Lock		Yes	
DPM Select		Yes	
Energy Saving		Yes, Level1/Level2/Level3	
Power Indicator On/Off		Yes	
PIP/PBP		No	
CABINET	Color	Black	
	Bezel Width	36 mm	
	Monitor Dimensions (W X H X D)	111.70cm (44.0") x 66.10cm (26.0") x 11.87cm (4.7")	
	Weight (head) / (head+stand)	28.54kg (62.91 lb) / 32.56kg (71.78 lb)	
	Monitor with Optional Stand & Speaker Dimensions (W x H x D)	111.70cm (44.0") x 75.78cm (29.8") x 30.26cm (11.9")	
	Carton Dimensions (W x H x D)	120.3cm (47.4") x 77.8cm (30.6") x 33.2cm (13.1") (Head Only) 140.6cm (55.4") x 81.0cm (31.9") x 30.0cm (11.8") (Full Package)	
	Packed Weight	31.27kg (69.25 lb) (head only) 37.62kg (83.25 lb) (full package)	
	VESA™ Standard Mount Interface (mm)	800 x 400	
	POWER	Power Supply	100-240V~, 50/60Hz
		Power Type	Built-in Power
Power Switch		No	
Power Consumption Typ./Max. DPMS Power Off		260W /300W 1W(RGB) / 2W(HDMI/DVI) 0.5W	
STANDARD (CERTIFICATION)	Safety	UL / c-UL / CB scheme / TUV	
	EMC	FCC Class "B" / VCCI / C-tick / CE / KCC	
	ErP / Energy Star	Yes / Yes (Energy Star 5.0)	

\* The specification could be changed without prior notice.